

MSequence - Automated goods issue

Simple, automatic and intelligent – load supply with the MSequence

Cost drivers and efficiency reducers at goods issue:

- ▶ High space requirement
- ▶ Loading errors
- ▶ Sorting errors relating to unloading points
- ▶ Long truck waiting times
- ▶ Personnel-intensive
- ▶ High complaint costs (returns, credit memos)

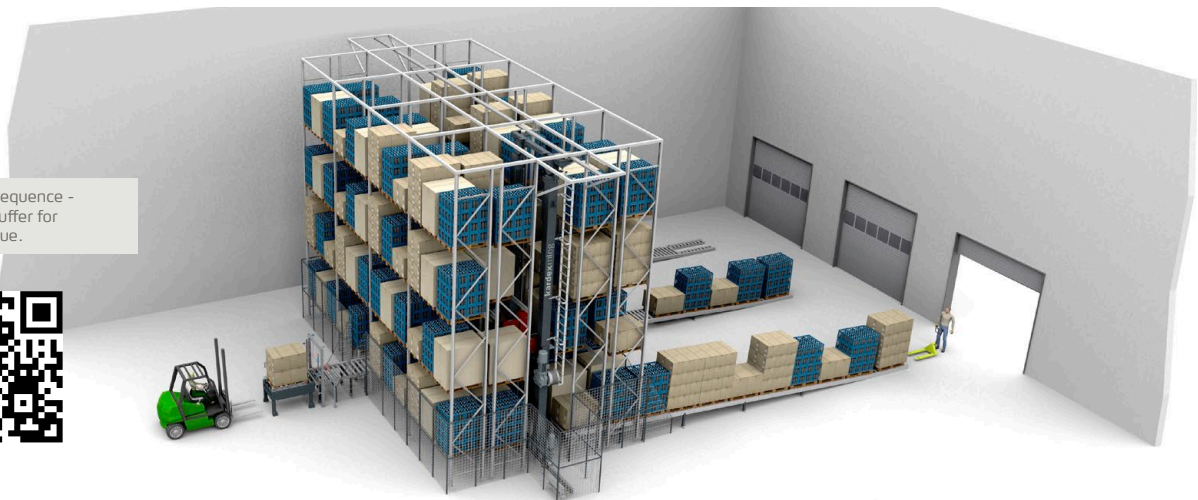
The solution for future-oriented, efficient and error-free goods issue.

To sustainably lower the costs in goods issue and to increase delivery flexibility and quality, Kardex Mlog has developed the dynamic sorting buffer MSequence. This ensures automatic, error-free and dynamic just-in-time order staging at the loading bay with computer-controlled loading of the trucks.

Your advantage

- ▶ Automatic staging of the loading orders
- ▶ High staging capacity in a small area
- ▶ Secure and error-free goods issue
- ▶ Reduction of waiting times
- ▶ 100% transparency of the loading process
- ▶ Automatic sorting by unloading point
- ▶ Reduction of personnel costs
- ▶ Reduction of equipment costs

Film: MSequence -
Sorting buffer for
goods issue.



Storage:

Pallet infeed with forklift truck (1 - 6-capability)
or automatic linking to existing
high-bay warehouse.



Fast & optimised loading time

Every 30 minutes – loading one truck correctly!



Completely error-free loading

Serves up to three loading bays simultaneously!



MSequence Variant Speed

Sorting buffer with double-deep storage!



MSequence Variant Volume

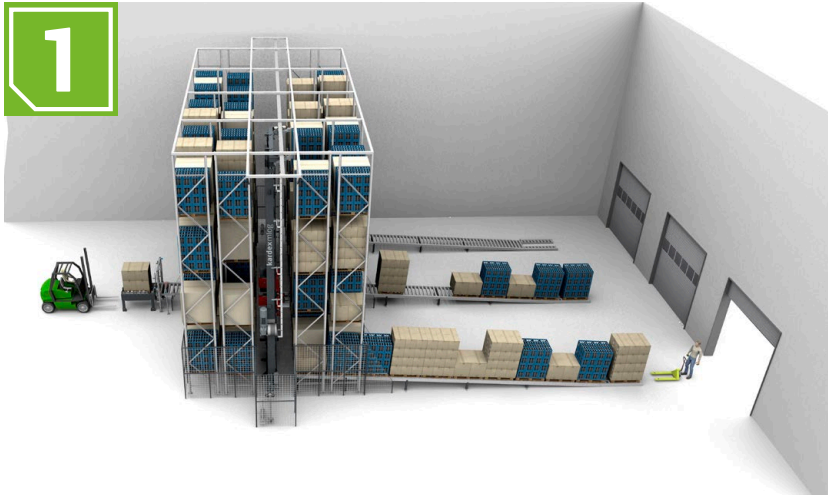
Sorting buffer with multiple-deep storage!

Retrieval:

Automatic staging of the orders
in the correct sequence at the
correct gate.

MSequence consists of

- ▶ 1 automatic storage and retrieval machine
- ▶ 1 stage conveying system for each loading bay
- ▶ 1 control technology (Siemens S7)
- ▶ Racking
- ▶ Security package
- ▶ Warehouse management software
- ▶ Installation and commissioning
- ▶ Training

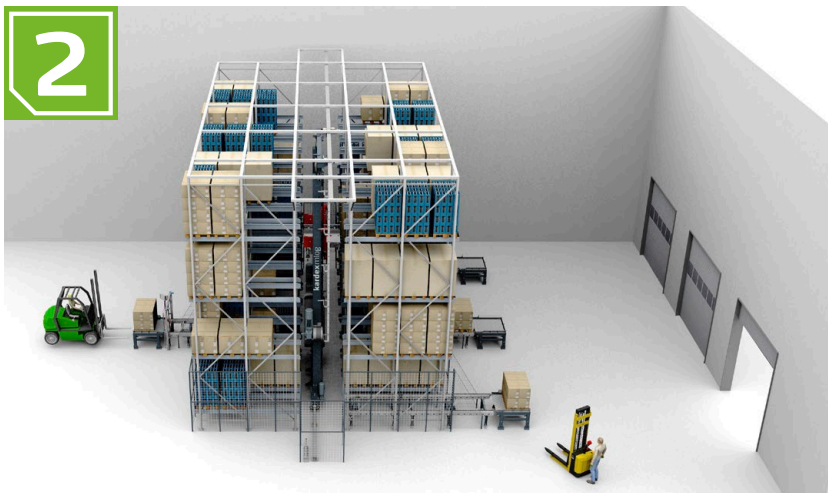
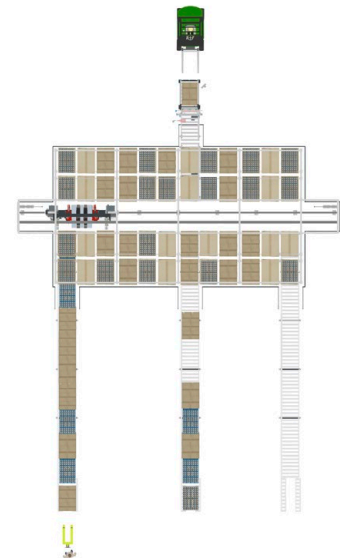


Properties

- Sorting buffer with **double-deep** storage
- Designed for maximum storage and retrieval capacity and space for 5.5 truckloads
- Storage of the pallets in longitudinal direction on driven roller conveyors with contour check
- Gate-based retrieval of the pallets on gravity conveyors with sequential computer-controlled assignment
- Adaptations possible to suit existing structural conditions

MSequence Variant Speed

Pallet load: 1,000 kg
Storage spaces: 184
Storage dimensions (WxHxD): 8 m x 10 m x 16 m
Retrieval cycles: up to 106/hour
Double cycles: up to 64/hour



Properties

- Sorting buffer with **multiple-deep** storage
- Designed for maximum buffer capacity for more than 8 truckloads
- Storage of the pallets in transverse direction on driven chain conveyors with contour check
- Gate-based retrieval of the pallets on driven chain conveyors with sequential computer-controlled assignment
- Adaptations possible to suit existing structural conditions

MSequence Variant Volume

Pallet load: 1,000 kg
Storage spaces: 272
 (with quadruple deep)
Storage dimensions (WxHxD): 10 m x 10 m x 17 m
Retrieval cycles: up to 94/hour
Double cycles: up to 57/hour

